

CONTACT MECHANISM
NORMALLY CLOSED

CONTACT RATING
DC12~24V 20mA(Max)

REPRAT ACCRACY
0.001mm

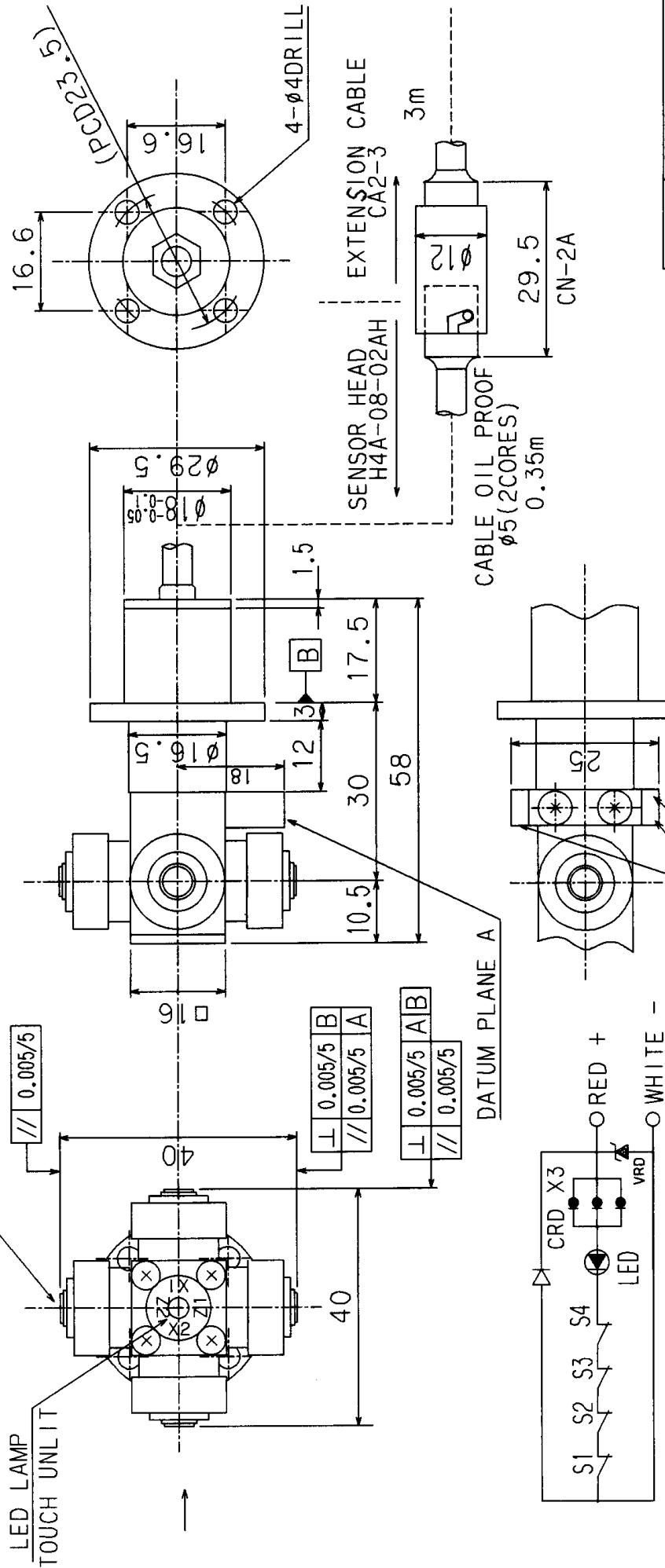
OPERATING SPEED
50~200mm/min(RECOMMENDED)

DEGREES OF PROTECTION
IPC IP67

4-φ5 TUNGSTEN CARBIDE
STROKE(OVER TRAVEL)2
CONTACT FORCE 2N

SET NUMBER: H4A-08-02A

COMPOSITION SENSOR HEAD H4A-08-02AH
 EXTENSION CABLE CA2-3



DATUM PLANE A
LEVELING BLOCK

APR	CHK	DRA	NAME	TOOL SETTING PROBE
Am	K. EBINA	01.6.1	A4 1/1	H4A-08-02A
DRAWING NUMBER			METROL. LTD	