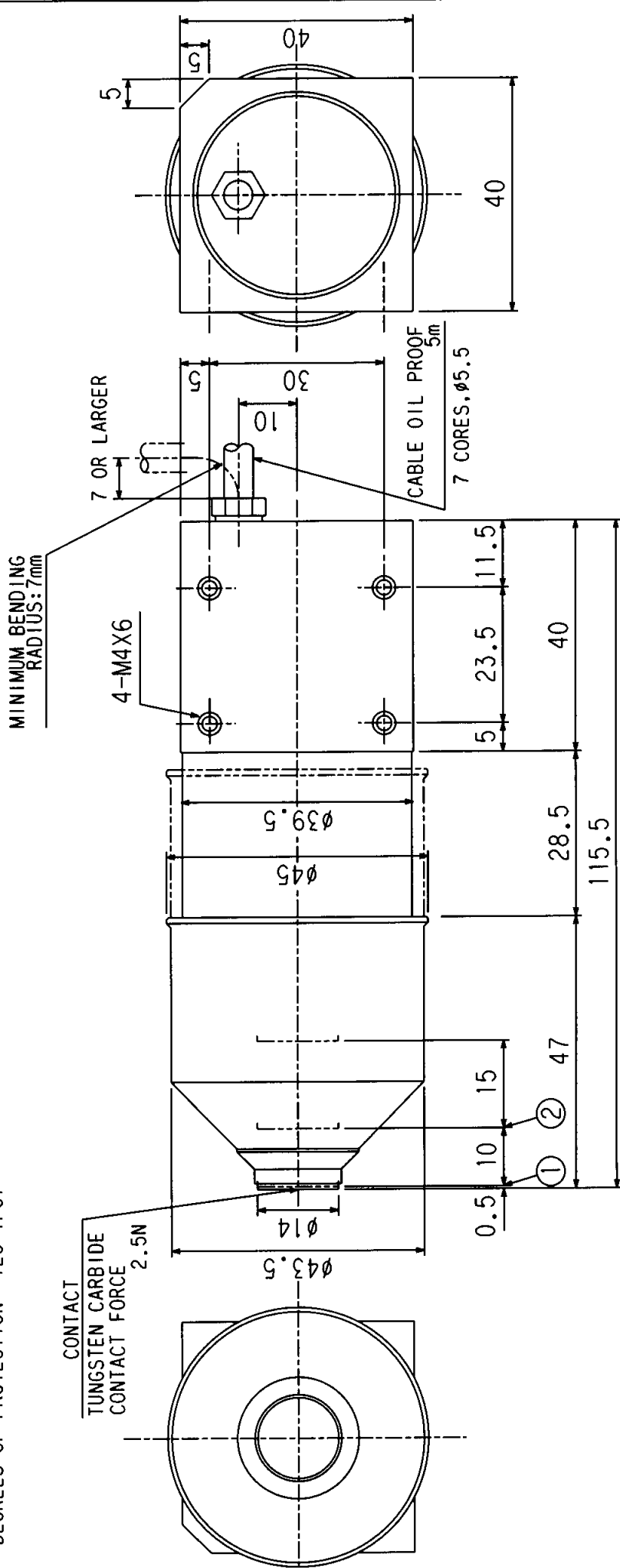
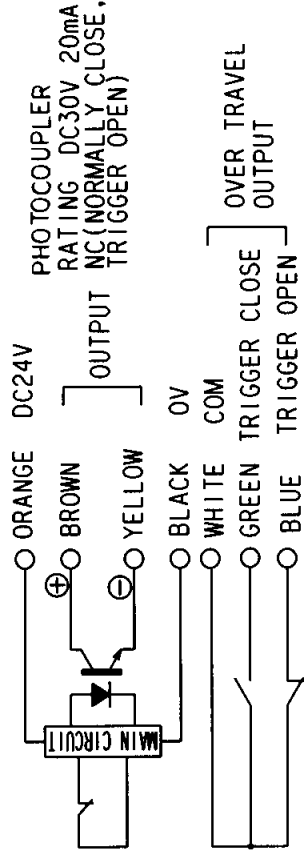


- ① SKIP SIGNAL
 NORMALLY CLOSED
 REPEATABILITY OF SKIP SIGNAL 0.001mm
 RECOMMENDED OPERATING SPEED 50~200mm/min
- ② OVER TRAVEL SIGNAL
 NORMALLY OPEN
 NORMALLY CLOSED
 MICRO SWITCH
 CONTACT RATING AC125V 0.3A
 OR DC30V 0.2A

DEGREES OF PROTECTION IEC IP67



APR	CHK	DRA	NAME	TOOL SENSOR
			DRAWING NUMBER	T24D-03
			1/1	METROL LTD.
				METROL